

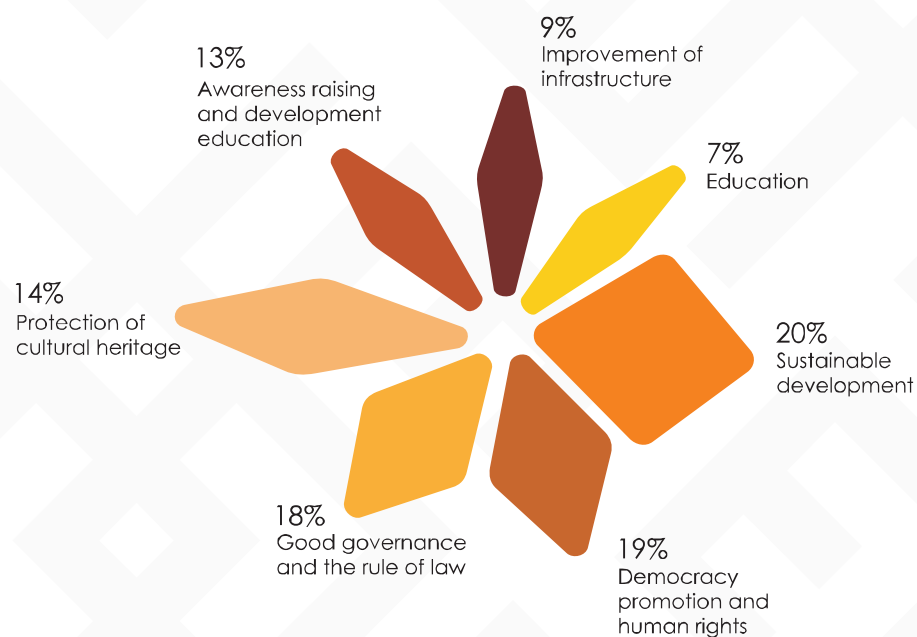


LITHUANIAN
DEVELOPMENT
COOPERATION

**FOR SUSTAINABLE AND
MEANINGFUL DEVELOPMENT:
RESEARCH AND EDUCATION**

For Sustainable and Meaningful Development: Research and Education

Research and education are essential elements in developing a just, enlightened and prosperous society and constitute an important part of Lithuanian development assistance. They help to promote the cultural diversity, quality education as well as to start the new and unexpected.



I. Network of scholars in Lithuania, Belarus, Ukraine and Kaliningrad region (Russia) provides academics and practitioners with a platform to cooperate in promotion of common European values.

Relevance of the common heritage

Scientists from Belarus, Ukraine and Lithuania work together in the field of research and publicity of common heritage of the Grand Duchy of Lithuania, a medieval state with a long-lived tradition of cultural and religious tolerance. The result is a "virtual archive museum" *Magnus Ducatus Lithuaniae* (www.mdl.lt) which includes digitalized documentary, iconographic and bibliographic values. The project helps to overcome values. The



project helps to overcome boundaries of national historiographies and promotes the **idea of belonging to the democratic European community.**

Discovering the multicultural past



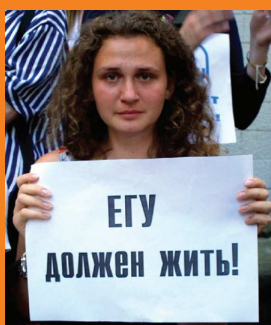
The project seeks to encourage the research of Jewish religious heritage in Belarus and Kaliningrad region

of Russia. International student teams investigate former and present synagogue buildings, learn to collect and process the data, plan the reintegration of these buildings into the urban landscape. Learning from the common past helps fostering tolerance so much needed in post-totalitarian societies.

II. Support for quality education lays the basis for future democratic society.

Belarus: EHU

European Humanities University (EHU) was expelled from Belarus in 2004 and reopened in Vilnius, in exile, in 2005 with the help of a number of other donors. With approximately 1,700 students from Belarus taking part in various EHU programs the project has become a major **European input into the creation of future modern and democratic higher education system in Belarus.**

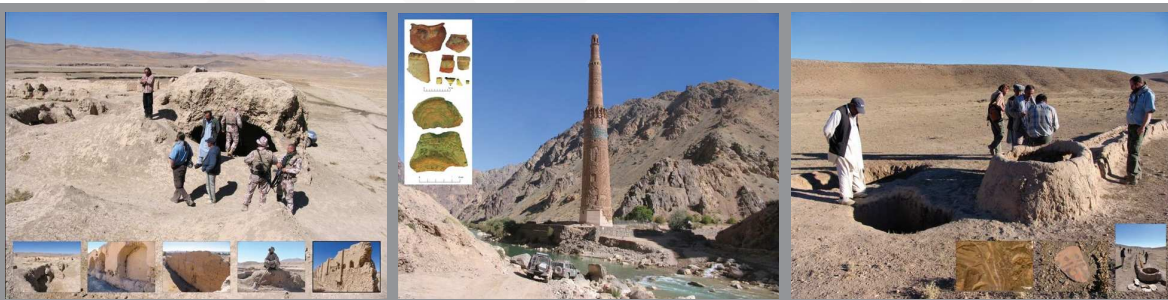


EHU developed distinctive competencies by being the first higher education institution integrating European standards and methods in the teaching and learning process, in accordance with the Bologna Process of higher education reform.

III. Research projects rarely yield quick results. They can, however, lead to sustainable solutions.

Afghanistan: Lithuania's archaeological mission in the province of Ghor

The first ever archaeological expedition in the province of Ghor has revealed **more than 30 unknown heritage objects**. The findings have been presented in exhibitions to both Afghan and Western public. Local administration is encouraged to establish the first history museum in the Province.



Afghanistan: Geological explorations in the province of Ghor

Lithuanian geologists from Vilnius University have been on a scientific expedition in Ghor. As a result, around 130 samples representing principal varieties of rocks are undergoing geochemical analysis. The purpose is to compile the **Map of the Mineral resources** of the province with the prospect of economic development of the province.

2009

January

Mon	Tue	Wed	Thu	Fri	Sat	Sun
			1	2	3	4
5	6	7	8	9	10	11
12	13	14	15	16	17	18
19	20	21	22	23	24	25
26	27	28	29	30	31	

February

Mon	Tue	Wed	Thu	Fri	Sat	Sun
						1
2	3	4	5	6	7	8
9	10	11	12	13	14	15
16	17	18	19	20	21	22
23	24	25	26	27	28	

March

Mon	Tue	Wed	Thu	Fri	Sat	Sun
						1
2	3	4	5	6	7	8
9	10	11	12	13	14	15
16	17	18	19	20	21	22
23	24	25	26	27	28	29
30	31					

April

Mon	Tue	Wed	Thu	Fri	Sat	Sun
			1	2	3	4
5	6	7	8	9	10	11
12	13	14	15	16	17	18
19	20	21	22	23	24	25
26	27	28	29	30		

May

Mon	Tue	Wed	Thu	Fri	Sat	Sun
				1	2	3
4	5	6	7	8	9	10
11	12	13	14	15	16	17
18	19	20	21	22	23	24
25	26	27	28	29	30	31

June

Mon	Tue	Wed	Thu	Fri	Sat	Sun
1	2	3	4	5	6	7
8	9	10	11	12	13	14
15	16	17	18	19	20	21
22	23	24	25	26	27	28
29	30					

July

Mon	Tue	Wed	Thu	Fri	Sat	Sun
			1	2	3	4
5	6	7	8	9	10	11
12	13	14	15	16	17	18
19	20	21	22	23	24	25
26	27	28	29	30	31	

August

Mon	Tue	Wed	Thu	Fri	Sat	Sun
					1	2
3	4	5	6	7	8	9
10	11	12	13	14	15	16
17	18	19	20	21	22	23
24	25	26	27	28	29	30
31						

September

Mon	Tue	Wed	Thu	Fri	Sat	Sun
	1	2	3	4	5	6
7	8	9	10	11	12	13
14	15	16	17	18	19	20
21	22	23	24	25	26	27
28	29	30				

October

Mon	Tue	Wed	Thu	Fri	Sat	Sun
			1	2	3	4
5	6	7	8	9	10	11
12	13	14	15	16	17	18
19	20	21	22	23	24	25
26	27	28	29	30	31	

November

Mon	Tue	Wed	Thu	Fri	Sat	Sun
						1
2	3	4	5	6	7	8
9	10	11	12	13	14	15
16	17	18	19	20	21	22
23	24	25	26	27	28	29
30						

December

Mon	Tue	Wed	Thu	Fri	Sat	Sun
	1	2	3	4	5	6
7	8	9	10	11	12	13
14	15	16	17	18	19	20
21	22	23	24	25	26	27
28	29	30	31			

Development Cooperation and
Democracy Promotion Department
Ministry of Foreign Affairs,
J. Tumo Vaižganto g. 2, LT-01511 Vilnius, Lithuania
Tel.: 2362457; 2362953
Fax: 236 2574
Email: projektai@urm.lt



LITHUANIAN
DEVELOPMENT
COOPERATION

www.orangeprojects.lt



URM
MINISTRY
OF FOREIGN AFFAIRS
OF LITHUANIA

www.urm.lt



www.lietuva1000.lt



www.vilnius2009.lt